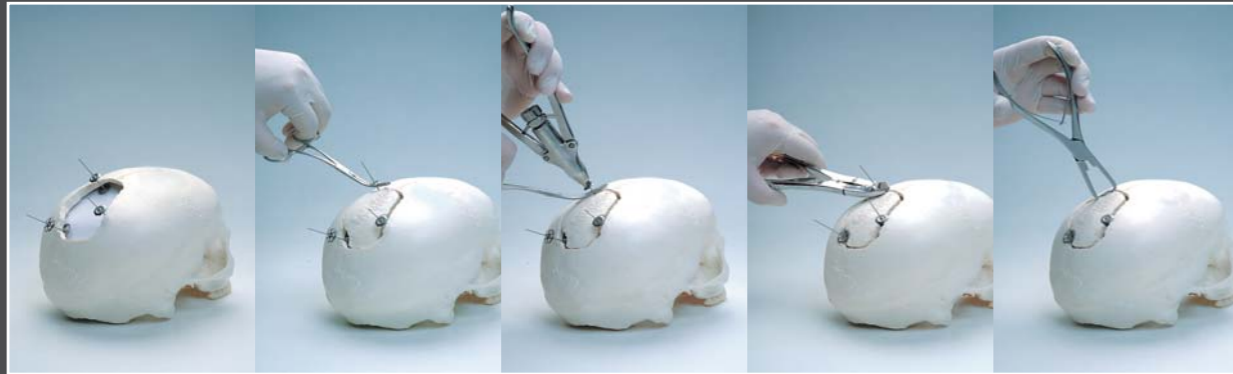


Application Procedure



Head Office

#702 Kolon Science Valley 2nd 811
Guro-Dong Guro-Gu Seoul, 152-050
Korea

Tel 82 2 850 3504
Fax 82 2 850 3537

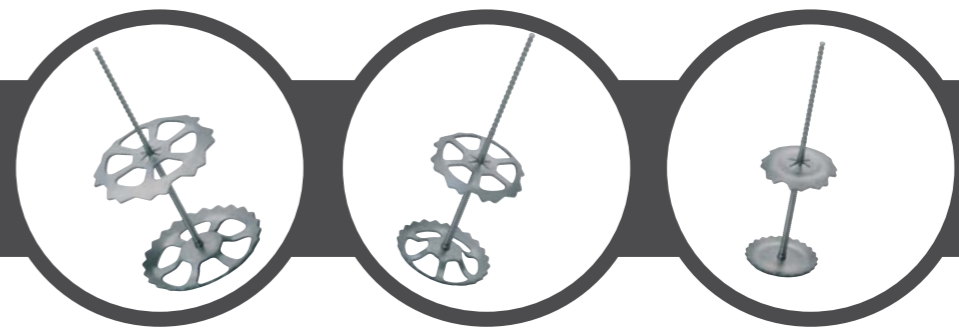
E-mail info@jeilmed.co.kr

www.jeilmed.co.kr



Jeil Medical Corporation

Speedy Flap



Cranial Bone Flap Fixation System

Quick, Safe and Stable fixation of cranial bone flaps to cranium
Simple and Easy application resulting in time and the cost savings

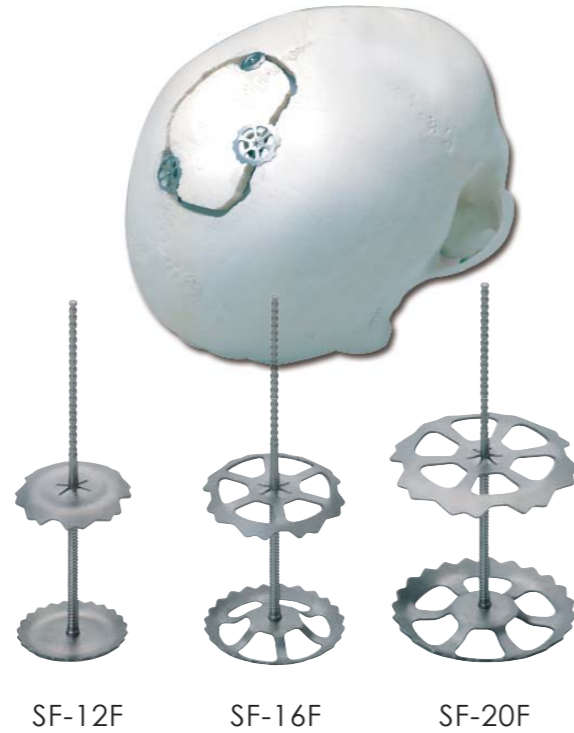


SF-C-EN 1012 Rev.00

Speedy Flap Clamps



- Provide rigid flap fixation
- 12, 16, 20mm diameter of disk cover for craniotomy gap and burr hole
- Made by titanium alloy(Ti-6AL-4V ELI)
- Static free X-ray,CT and MRI
- Sterile packaging for convenient use

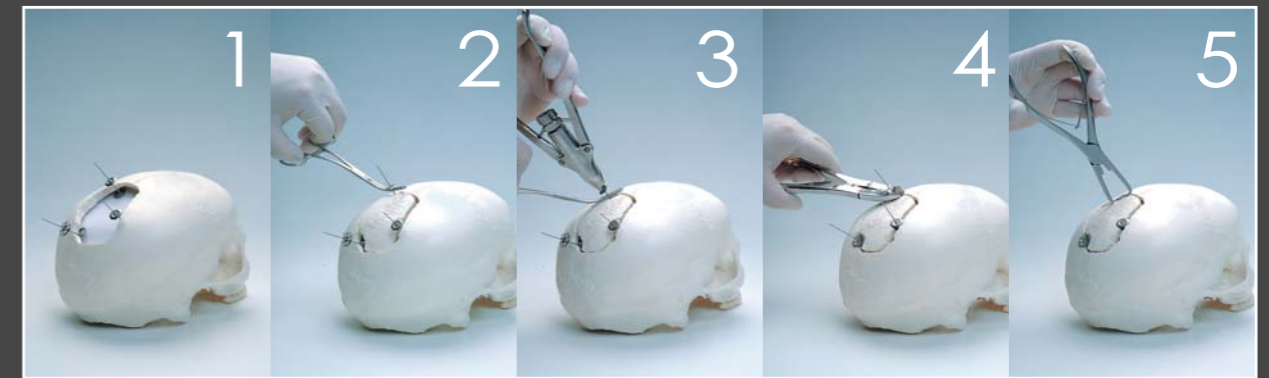


SF-12F

SF-16F

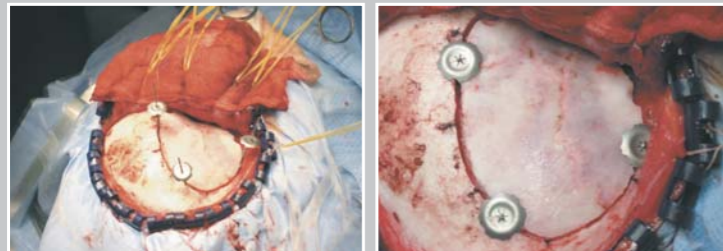
SF-20F

Application Procedure



- 1 The speedy flap clamp is positioned equidistantly by inserting the lower clamp between the dura and cranium. The 16, 20mm diameter clamp is positioned for the burr hole. The 12mm diameter clamp is positioned for the craniotomy gap.
- 2 Replace the bone flap in its original position. The holding forceps holds the clamp in place to prevent unintentional movement.
- 3 The applying forceps is brought into position above the rod of Speedy Flap. The handles of applying forceps are pressed together to tighten the clamp against the cranium. Remove the Holding forceps prior to final tightening.
- 4 Remove external protruding portion of Rod with Rod cutter, which must be held.
- 5 The removal forceps can be used to detach when re-entry is required.

Clinicals



Postoperative X-ray



Speedy Flap Order Guide

Item	Code	Description	Quantity
Speedy Clamp	SF-12F	Dia. 12mm(Single Pack)	1
	SF-16F	Dia. 16mm(Single Pack)	1
	SF-20F	Dia. 20mm(Single Pack)	1
System Instrument Set	SF-100	Instrument Tray Set (Includes SF-001, 002, 003, 004, 005, 006, 007)	1
Instrument	SF-001	Applying Forceps	1
	SF-003	Rod Cutter	1
	SF-004	Holding Forceps	1
	SF-005	Removal Forceps	1
	SF-006	Wrench	1
	SF-007	Driver	1
	Instrument Tray	SF-002	Autoclave Tray



Speedy Flap Instruments

SF-001

Applying Forceps

Can be disassembled for cleaning and sterilization
Easy and accurate to tight clamp against the bone flap



SF-003

Rod Cutter

To remove the remaining external protruding portion of the rod
Blades can cut off rod directly above the upper clamp



SF-004

Holding Forceps

To prevent clamp movement during application
To prevent the lower clamp from pressing the dura during application



SF-005

Removal Forceps

Simply remove the upper clamp from clamp assembly
Self retaining teeth holds the upper clamp

